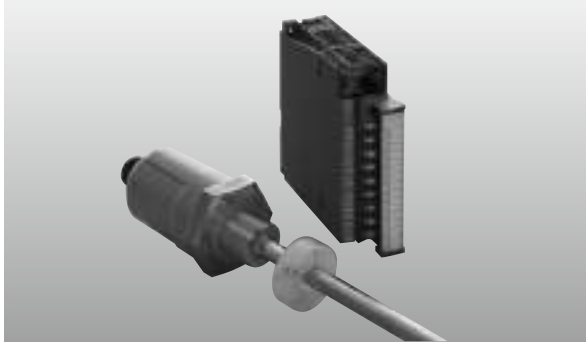


DC-Q Controller

Q-bus

Noise
Cancel

MELSEC-Q Built-in unit



This unit is the converter for GY probe, which can be built into PLC MELSEC-Q (Mitsubishi).

One unit can be associated with 1 probe (1 axis) or 2 probes (2 axes) and stores digital position data (Binary code). The CPU unit can read the data through the buffer memory.

Specifications

No. of probe	1 axis or 2 axes
Resolution	Programmable Min.1 μ m(G1), Min.0.1mm(G2,G3)
Sampling freq.	1kHz (STD) (up to stroke 1000mm)
I/O occupation points	Intelligent, 32 points
current consumption	1 axis:0.7A(5VDC), 2 axes:0.9A(5VDC)
function	external preset, upper and lower limit
cable length	Max. 200m(G1, G2) Max. 100m(G3)
working temp.	0°C~+60°C
storage temp.	-20°C~+75°C

option : multi magnets type (DC-Q10-G1-S01)

Detecting Max. 32 pcs magnets position on one probe simultaneously.

Model

DC-Q 0 -

① ② ③ ④

① No. of probe

1 : 1 axis
2 : 2 axes

② Application

blank : FA industry
H : steel industry (resin coating for humidity)

③ Probe type

G1 : GYMR6, GYSE-R, GYcRS, GYFRS, GYKM-RS,
GYKMR, GYHTR(※), GYRHP-MR6, EX-GYdT-R
G2 : GYcRP
G3 : GYHR
※Min. resolution is 0.05 mm

④ Option(1 axis type only)

blank : without option
P : with pulse output
-S01 : multi magnets type

Dimensions

