

Profinet Absolute Multiturn Encoder



Description:

Profinet absolute multiturn encoder, which has good performance against mechanical damage, and can withstand higher axial and radial load. Various flanges could meet different requirements, conforming to Profinet IO protocol to ensure the max. resolution of 65536 and max. revolution of 4096, which can be adjusted according to customer's field requirements. Its high speed communication and good anti-interference ability make the operation of customer's equipment more stable.

Features:

- 4 × LED status indicator, easy-to-read monitoring status.
- 3 × M12 connector, fast connection.
- PROFINET IO/RT has the function of intelligent diagnosis and high-speed data transmission.
- Application parameters are configured via software to facilitate debugging and maintenance.
- High speed data transmission, update time ≤1ms.

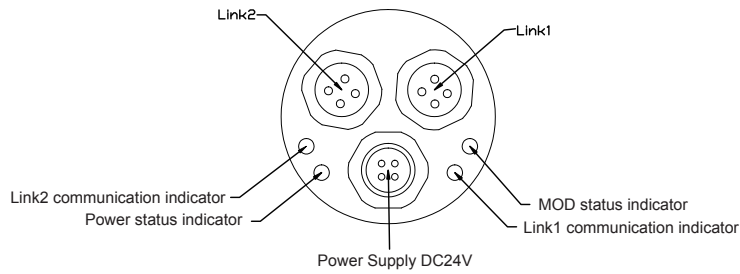
Mechanical Characteristics

Shaft diameter (mm)	Φ10g6	-58C
Hollow shaft diameter	Φ10H7	
Protection class	IP65	
Max. speed (r/m)	6000	
shaft load(axial)	40N	
shaft load(radial)	80N	
Shock resistance	50G/11ms	
Vibration resistance	10G 10~2000Hz	
Vibration resistance	10° revolution	
Moment of inertia	Approx. 1.8x10 ⁻⁶ kgm ²	
Starting torque	<0.05Nm	
Housing material	Al-alloy UNI 9002/5 -(D11S)	
Cover material	Al-alloy 6060	
Flange material	Al-alloy UNI 9002/5 -(D11S)	
Operating temperature	-40 °C~~+80 °C	
Storage temperature	-45 °C~~+85 °C	
Weight	~600g	

Electrical Characteristics

Max. revolution	4096 (12 bits)
Max. resolution	65536 (16 bits)
Supply voltage	10~30 Vdc
Current consumption (no load)	200mA
Max. rate	100 Mbits/s
Linearity	12bits+/- 1/2 LSB
Interface	PROFINET IO/RT Class C
Data transmission rate	10/100 Mbit/s
Encoder sub-protocol	V4.1 Class3

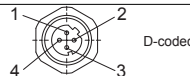
Profinet Absolute Multiturn Encoder



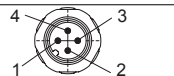
LED indicator

Power indicator:	Green light on is normal, red light on is power failure, light off is no power
Communication indicator:	Green light on is normal connection, blinking is data transmission in progress, light off is not connected
MOD status indicator:	Green light on is working normally and the light off is abnormal.

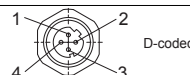
Data port 1

Signal	T×D+	R×D+	T×D-	R×D-	
Pin No.	1	2	3	4	

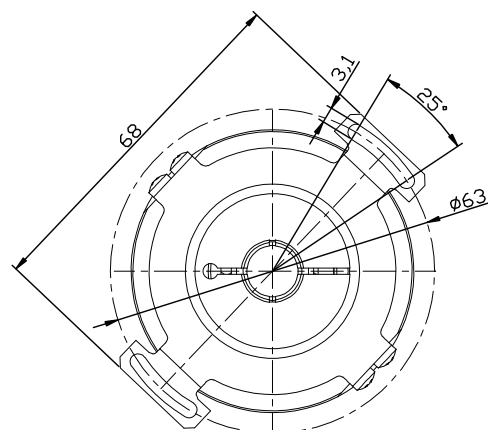
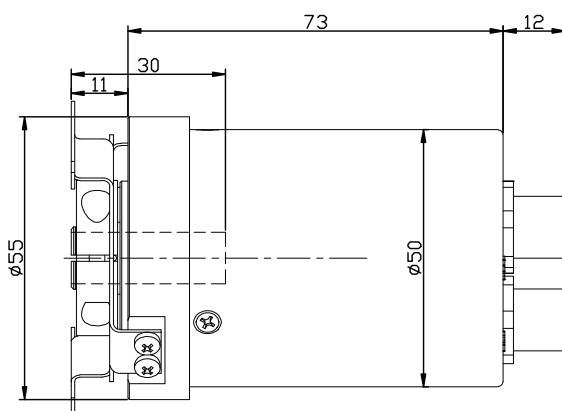
Power interface

Signal	+V	—	-V	—	
Pin No.	1	—	3	—	

Data port 2

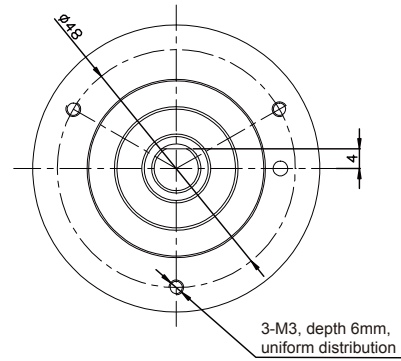
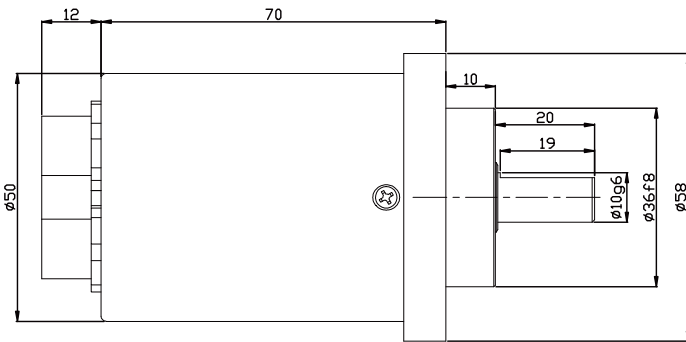
Signal	T×D+	R×D+	T×D-	R×D-	
Pin No.	1	2	3	4	

Dimensions



Profinet Absolute Multiturn Encoder

Dimensions



Order Code:

EAM 58 C 10 - B F6 X T R - 4096/8192PNOM. XXXX

XXXX=Special code

Resolution

Singleturn resolution
65536 (16bits) optional

Outlets direction

Nonsense

Types of connection

T= Integrated bus coupler
terminal with 3 of M12 socket

Output logic

X= Nonsense

Output and Supply voltage

F6=Profinet IO 10~30Vdc

Output code

B=Binary

Shaft/hollow
shaft diameter

10=Φ10g6mm

Flange type

C=Φ36 Clamping flange, shaft length:20mm

w=Blind hole hollow shaft flange, double wing spring plate installation

Housing dimension

58 =Φ58

Series

EAM = Profinet absolute multiturn encoder

Matching connector code:

Power terminal connector: TMSP 12F-F4

Bus input connector: TMSP12FD-M4

Bus output connector: TMSP12FD-M4