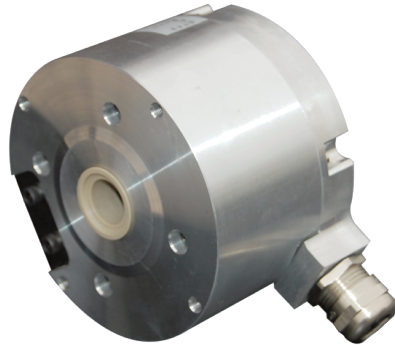


Heavydic Series Heavy Duty Encoder EX90R



Description

Heavydic series heavy duty encoders EX90R are specially used in heavy industries and heavy-load applications. It provides excellent performance in withstanding mechanical shocks and higher axial and radial loads. Many mechanical mounting accessories are available. Various electrical circuit designs are available to match the mainframe control computers. Its resolution is up to 2048ppr, and it guarantees precision controls and heavy load safety.

Features

- Crank arm or various accessories provide greater flexibility in connection
- Metal housing for greater shock resistance
- Stainless steel hollow shaft $\Phi 16$, PEEK dielectric could insulate the electromagnetic interference effectively
- Reverse connection protection and short circuit protection
- Protection class IP65
- Resolution up to 2048ppr

Mechanical Characteristics

Shaft diameter (mm)	$\Phi 16G7$
Protection class	IP65
Speed (r/m)	Max. 3000
Max load capacity of the shaft	
Axial load capacity	100N
Radial load capacity	200N
Shock resistance	50G/11ms
Vibration resistance	10G 10...2000Hz
Bearing life	10^9 revolution
Moment of inertia	$1.8 \times 10^{-6} \text{kgm}^2$
Starting torque	$<0.01 \text{Nm}$
Body material	AL-alloy
Housing material	AL-alloy+PEEK
Operating temperature	$-20^\circ \text{C} \dots +80^\circ \text{C}$
Storage temperature	$-25^\circ \text{C} \dots +85^\circ \text{C}$
Weight	1330g

Resolution: 1024, 2048

Note: Other resolutions are available upon request.

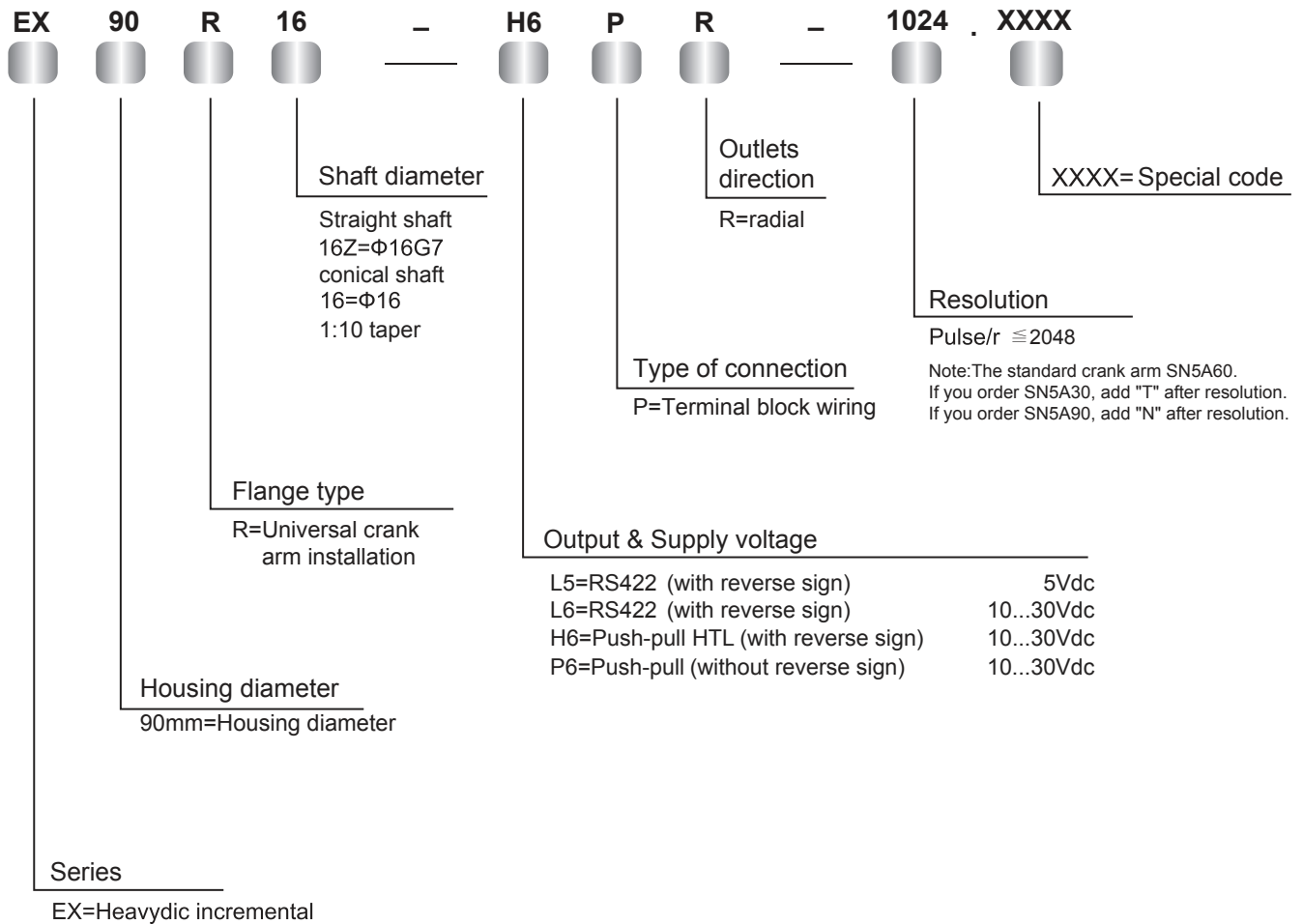
PEEK Poly (ether-ether-ketone): possesses high mechanical strength, rigidity and hardness, high wear resistance, good frictional behavior, heat resistance, resistance to chemical attack, hydrolysable, ultraviolet resistant, radioresistance, non inflammability

Electrical Characteristics

Output circuit	RS422	Push-pull
Resolution	Max. 2048ppr	Max. 2048ppr
Supply voltage(Vdc)	5V/10...30V	10...30V
Power consumption (no load)	$\leq 80 \text{mA}$	$\leq 125 \text{mA}$
Permissible load (channel)	$\pm 50 \text{mA}$	$\pm 80 \text{mA}$
Pulse frequency	Max. 300 kHz	Max. 300 kHz
Signal level high	Min. 3.4V	Min. Ub-1.8V
Signal level low	Max. 0.4V	Max. 2.0V
Rise timeTr	Max. 200ns	Max. 1 μ s
Fall timeTf	Max. 200ns	Max. 1 μ s

Heavydic Series Heavy Duty Encoder EX90R

Order Code:



Accessory	
E23310044	lock-ring 17X2
E23231020	M6X16bolt
E23231210	elastic gasket-M6
E23220002	SN5A60torque arm

1) When the provided power voltage is correct:
Short -circuit to channel, 0V or +UB is permitted when UB=5V;
Short -circuit to channel, 0V is permitted When UB> 5V.